

Comparative Analysis of Noise Pollution in Urban Zones of Peshawar Through Noise Descriptors

Shahla Nazneen¹, Shehla Gul², Zahid Ali³, Sardar Khan⁴, Neelum Ali⁵, and Sidra Bibi⁶

<https://doi.org/10.62345/jads.2024.13.3.59>

Abstract

In recent years, noise pollution in urban zones has reached critical levels, primarily driven by increased road traffic and poor urban planning. This research is crucial as it quantifies noise pollution in different urban settings of Peshawar, Pakistan, providing valuable insights into the severity of the issue. By using noise descriptors such as Leq-24h, L1, L10, L50, L90, L99, Lmax, Lmin, LNP, and NC. A comparison with the Pak-NEQS 2010 standards revealed that during the daytime, 100% of silence zones, 91% of commercial areas, and 90% of residential areas exceeded the permissible noise limits. Similarly, nighttime measurements showed that 83% of silence zones, 87% of commercial areas, and 90% of residential areas were also above the acceptable limits. Strong correlations between Leq and other noise descriptors were observed, and land use characteristics significantly impacted noise levels during the day. This data highlights the urgent need for regulatory measures to mitigate the growing issue of noise pollution in urban environments.

Keywords: Noise Pollution, Urban Zones, Noise Descriptors.

Introduction

Environmental noise has been well recognized as one of the major global problems (de Souza, et al., 2020), affecting quality of life in urban areas (Frei, et al., 2014; Ozkurt, et al., 2015; Sahu, et al., 2020). Increased urbanization can be linked to noise pollution and its adverse effects on human health (Basner, et al., 2014; Halonen, et al., 2015; Hohmann, et al., 2013; Yinhua, et al., 2020). The reason why noise pollution has gained attention from scientific community is because of its relationship with health problems (Murphy & King 2010). Continued exposure to noise has been linked to many health problems (Halonen, et al., 2015) such as sleep disturbance, cognitive impairment in children (Evans & Hygge, 2007), tinnitus (WHO, 2011), cardiovascular diseases (Babisch, 2014; Hemmingsen, et al., 2015; Lee, et al., 2015) physical and psychological discomfort (Jagniatinskis, et al., 2016), annoyance (Babisch 2014; Clark et al., 2012; Lee et al., 2015) and hearing impairment (Rana, et al., 2015). Noise can be benign, steady, unpredictable, anonymous and intermittent (Baker, 2015).

¹Department of Environmental Science, University of Peshawar, Pakistan.

Corresponding Author Email: shahlanaznin@uop.edu.pk

²Department of Geography and Geomatics, University of Peshawar. Email: sgul@ualberta.ca

³ Department of Geography, Govt. Degree College, Akbarpura, Nowshera. Email: azahidlec@gmail.com

⁴Department of Environmental Sciences, University of Peshawar, Pakistan. Email: sardar@uop.edu.pk

⁵Quality Enhancement Cell, Northwest School of Medicine, Peshawar, Pakistan. Email: neelumali12@yahoo.com

⁶National Centre of Excellence in Geology, University of Peshawar. Email: sidrasiddique23@gmail.com



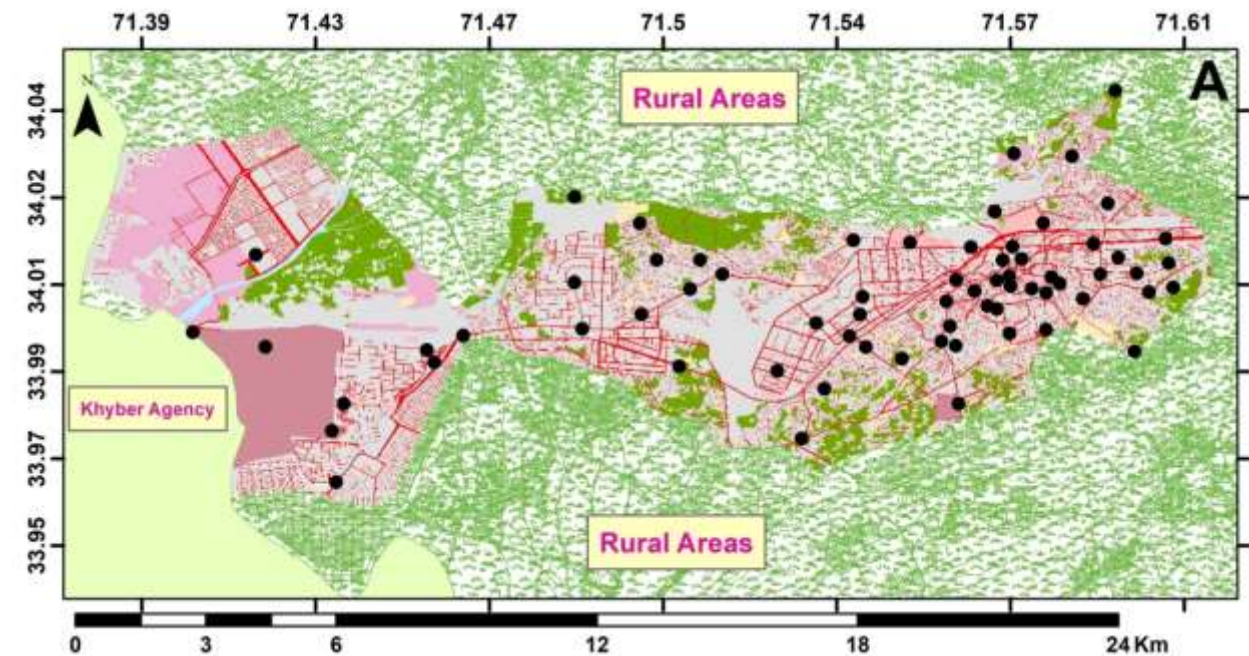
Important sources of noise pollution are urban traffic and industrial activities (Malakootian et al., 2012; Salvato et al., 2003). Among all sources, road traffic is the most dominant source of noise in many cities (Hammer, et al., 2014; Tobías, et al., 2015) and is proven by several previous studies (EEA 2014; Golmohammadi, et al., 2009; Lam, et al., 2009; Li, et al. 2002; Mansouri, et al., 2006; Méline, et al., 2013; Morillas, et al., 2002; Phan, et al., 2010; Sánchez-Sánchez, et al., 2015; Swain & Goswami, 2013) . Beside road traffic noise in urban areas, spatial distribution of noise pollution is also related to open spaces, the type of passages, construction density, physical position of buildings, population distribution (Ariza-Villaverde et al., 2014) , expansion of roads network, construction of flyovers (Mishra, et al., 2010) ubiquitous uses of machineries (Moudon , 2009) and unbalanced urban development (Gholami et al., 2012) . One of the effective scientific tools that can be used to measure noise is noise mapping that not only evaluates the current noise situation but also assess future scenario for the noisy environment (Cai et al., 2015; Suárez & Barros 2014; Yang et al., 2020) . It considers complex acoustic environment and provides concrete knowledge to policy makers, decision makers and related experts (Klæboe et al., 2006; Tsai et al., 2009) to visualize, identify and solve the condensed status of existing and changing trends in noise problems (Cho et al., 2007; Karipidis et al., 2014) , severity of noise pollution levels in urbanized cities (Mehdi, et al. 2011) , the invisible contaminants and hotspots of noise (Suárez & Barros 2014) . These maps are easy to understand as they help the users to easily identify the noise levels assigned to each location (Asensio et al., 2011) , help to visualize noise levels in colors and to raise exposed population awareness regarding noise levels (Rana et al., 2015) . Similarly, noise can be assessed through different parameters such as Equivalent Continuous Level (Leq) and different statistical centile levels such as L10, L90, L50, Noise climate, Level of Noise pollution as described in the methodology section.

Noise pollution varies significantly across different urban zones due to diverse noise sources and varying levels of human activity. In residential areas, noise is typically generated from household activities and moderate traffic, while commercial zones experience higher levels of noise from intense vehicular movement, businesses, and public interactions. Silence zones, such as hospitals or schools, are generally expected to have lower noise levels but are still impacted by external noise sources. Given these variations, this study was designed to comprehensively analyze and quantify noise levels in different urban zones—residential, commercial, and silence—in Peshawar, one of Pakistan is densely populated and congested cities. By utilizing noise descriptors such as Leq, L10, L50, L90, NC, and LNP, the study aims to assess both the intensity and fluctuation of noise in these zones. The results were further visualized through noise maps and other visual techniques to provide a clearer understanding of spatial noise distribution, making the data more accessible for stakeholders and policymakers to devise targeted noise management strategies.

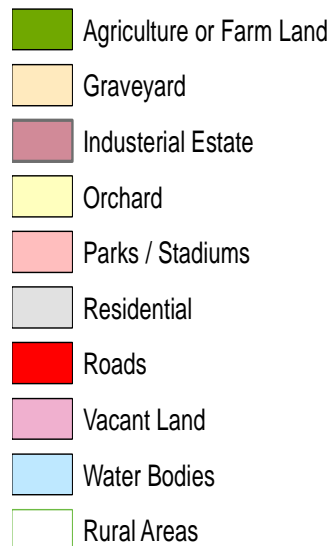
Study Area

Peshawar, a capital city of one of the provinces of Pakistan is selected as a study area. It lies between 33° 44' and 34° 15' north latitude and 71° 22' and 71° 42' east longitude with a total area of 1,257 km² . It is divided into 92 union councils out of which 36 are urban union councils. The urban land use map of the study area is given in figure 1.

Figure 1: Land use of urban zones of Peshawar; Data points are represented as black dots



Landuse (Urban areas)



Methodology

A 24-h noise measurement was conducted with Extech's Datalogging Sound Level Meter. The Extech's data logger complies with application standard IEC 651 and ANSI 1.4 sound level meter. The instrument was calibrated by the internal sound level calibrator every time before taking noise sampling and was set at 'A' weighted network to record noise sample after every minute for 24 h exposure time. A total of 1440 readings were recorded for every location. The instrument was placed at a height of 1.5 meters above the ground and at a minimum distance of 2-3 meters from the building façade in accordance with the World Health Organization (WHO) Guidelines for Community Noise'2000. The protective foam on its sensor system was used to minimize the effect

of airflow. Before conducting noise measurement, primary and secondary streets were surveyed and the study points were identified. A total of 59 points from commercial [n=23], residential [n=30] and silence zone [n=6] were selected and noise measurement was carried out on days without rain or strong wind. Noise indices are used to assess different noise levels. The noise indices that are helpful to assess noise are; Leq (Equivalent Continuous Level) which is used to determine noise level for specific period of time, Ld for noise disturbance during daytime, Ln for noise disturbance during the nighttime (Hadzi-Nikolova et al., 2012). For daytime the values were taken from 06:00 am to 10:00 pm and for nighttime 10:00 pm to 06:00 am as given in the Pakistan-National Environmental Quality Standards'2010. For every measured location Leq-24h, L1, L10, L50, L90, L99, LNP and NC were computed. Leq, Ld and Ln were determined by the following formula (Tripathy, 1999). Similarly, statistical centile levels are used for the percentage of time that the noise level exceeds" (Tripathy 1999), Important statistical centile levels are L1 (maximum or the loudest noise events), L10 or peak sound levels (spatial, intrusive or intermittent), L50 or Mean Sound Levels (spatial median noise levels), L90 or background or residual noise levels (noise climate index) and L99 (lowest noise level during the measurement period), Noise Climate and Level of Noise Pollution were determined for each location using the formula. LNP represents short term variation of Leq (Phukan & Kalita, 2013). It incorporates both Leq and NC and is the best indicator of noise pollution (Pathak et al., 2008) in the environment for psychological and physiological disturbance of the human system (Swain & Goswami, 2013).

The limit set out by Pakistan National Environmental Quality Standards (Pak-NEQS'2010) for commercial areas for daytime is 65 dB (A) and nighttime is 55 dB (A), for residential areas, 55 dB (A) for daytime and 45 dB (A) for nighttime and for silence zone it is 50 dB (A) for daytime and 45 dB (A) for nighttime. According to Pak-NEQS'2010, the silence zone shall be declared by the competent authority and it is an area not less than 100 meters around hospitals, educational institutes and courts. United States Department of Housing and Urban Development (US HUD' 1971 and 1985) criteria was used for different zones to categorize them as clearly acceptable, normally acceptable, normally unacceptable and clearly unacceptable for the parameters of L1, L99 and LNP. Noise maps were created for urban zones of Peshawar using the sampled location measurement with the help of ArcGIS 10.4.1 also used by (Murphy et al., 2009; Nejadkoorki et al., 2010) using IDW interpolation method to predict noise levels at intermediate points. The interpolation techniques are used by many researchers in many fields including noise pollution (Mehdi et al., 2011; Nejadkoorki et al., 2010). Road density map was also created for the urban zones. Different noise indicators Ld, Ln L10, L50, L90, NC and LNP both for day and nighttime were used to gauge noise emissions in the study area. Before selecting a data point extensive survey was carried out and characteristics of the road network such as slope, number of lanes, number of vehicles, settlements, traffic flow beside meteorological and topographic data was considered. Areas with the different characteristics were categorized and noise was recorded only in such areas which were different from one another in above mentioned aspects.

Statistical evaluation was done on the results of the noise measurements using SPSS v. 23 and figures were prepared on sigma plot v. 11.0. Noise pollution maps were created in ArcGIS v. 4.2.

Results and Discussion

Leq dB (A) At Different Zones during Day and Nighttime

The Leq dB (A) recorded for commercial areas (daytime) ranged between 61.3 - 87.2 dB (A) (mean=72.3 dB (A)), for residential areas, 48.8 - 77.9 dB (A) (mean=65.5 dB (A)) and for silence zone, 57.2 - 72.3 dB (A) (mean= 66.2 dB (A)). Comparing the noise levels with Pak-NEQS'2010

showed that during daytime, 100% silence zone, 91% commercial and 90 % residential areas were beyond the permissible limit. Leq dB (A) for nighttime recorded at commercial areas ranged between 24.6 - 70.7 dB(A) (mean=61.2 dB (A)), residential areas 38.3 - 70.9 dB(A) (mean=55.9 dB (A)) and silence zones 42.4 - 64.1 dB (A) (mean=57.6 dB (A)). Almost similar to the results of daytime, the noise levels recorded for nighttime showed that 83 silence zones, 87% commercial and 90 % residential areas were beyond the permissible limit set by Pak-NEQS'2010. It is pertinent that minimum, maximum and mean Leq dropped during the nighttime. Several studies conducted not only in developed but also developing countries have shown high noise levels in all the three zones (Al-Shobaki & Jamrah 2008; Alam, et al. 2001; Olayinka 2012; Pathak, et al. 2008; Phukan and Kalita 2013; Swain and Goswami 2013) .

Khaiwal, et al. (2016) measured noise levels beyond the permissible limit in and around sensitive zone in north India, Hunashal & Patil (2012) revealed an alarming situation regarding noise pollution in Kolhapur, India and recorded highest Leq for industrial-cum-residential zone (72.25 dB (A)) followed by commercial-cum-residential zone (64.47 dB (A)), educational zone (63.71 dB (A)), and silence zone (42.84 dB (A)). Similarly, Chowdhury et al., (2010), Alam et al., (2001) in Dhaka, Bangladesh, Garoum et al., (2010) in Agdal district in (Rabat city, Morocco), Olayinka (2012) in Ilorin, Nigeria, Zeid et al., (2000) in Arrabba, Palestine, Zannin, et al., (2002) in Curitiba, Brazil, Li et al., (2002) in Beijing, Piccolo et al., (2005) in Messina, Italy and Yilmaz and Ozer (2005) in Erzurum, Turkey also recorded high noise levels in their study areas. In comparison to their daytime noise levels, the nighttime noise levels were low due to decrease in commercial activities. However, the noise levels recorded at the residential areas were not as high as recorded at the commercial areas but still beyond the permissible limits set for residential areas. The reason observed was that in these areas (residential), there was presence of all types of shops including audio/video CD shops, grocery shops, tailors and meat/poultry shops. This is one of the reasons that noise levels calculated were beyond the permissible limit both during day as well as nighttime. There were few residential areas which were far away from main roads but still showed high noise levels. The reason for these high noise levels were two wheeled vehicles (motor bikes) that can reach to narrow places and produces loud noise. Similarly, the noise levels recorded around hospitals and educational institutions showed high noise levels due to improper planning and mismanagement can be easily witnessed in these areas which had led to high noise levels both at day and nighttime. Standard deviation calculated at different locations both at night and daytime is indicative of the fact that high fluctuating noise is encountered in all areas that can lead to many health problems. It is well established fact that population exposed to high noise levels may suffer from ulcers, increase blood pressure, irregularity of heart rhythms, sleeplessness, stress, irritability, misunderstanding what is heard and reduction of productivity (Evans & Hygge 2007; WHO, 2011) , hearing loss (Joshi et al., 2003) , bad temper, headache, loss of concentration, aural communication disturbances, hearing problem (Agarwal & Swami, 2010; Lam, et al., 2009; Muzet ,2007) and annoyance (Khaiwal et al., 2016).

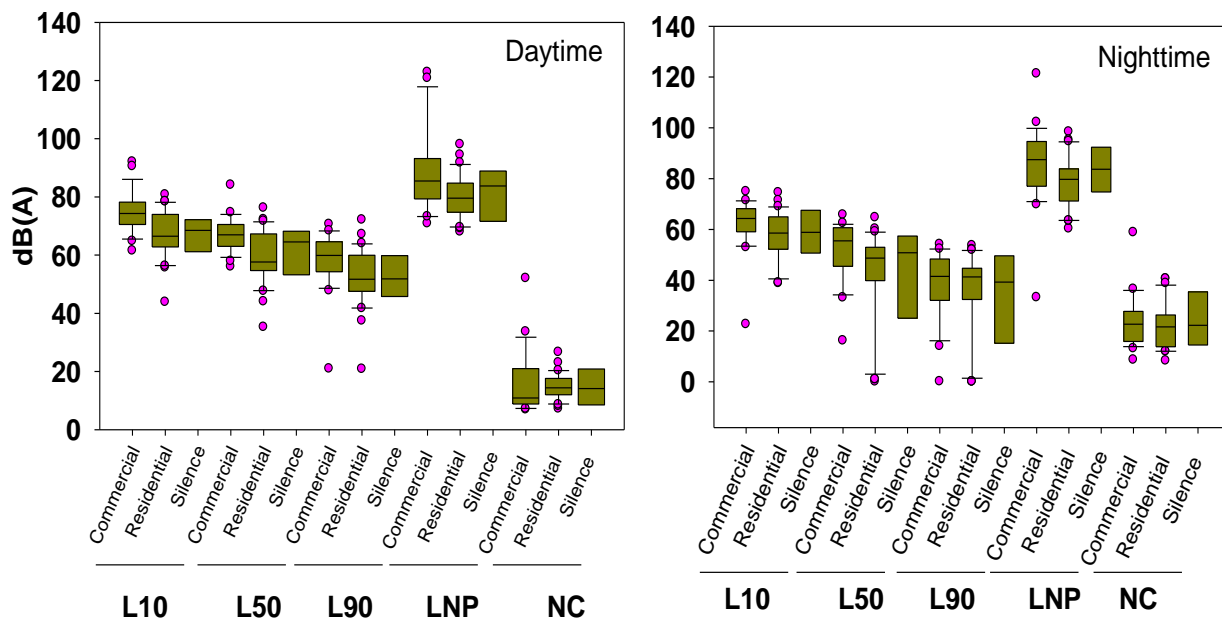
The high noise recorded in the study area in all the three zones made it evident that there is a violation of laws taking place in these areas; especially silence and residential zones and the people living in these areas may suffer from different psychological and physiological diseases related to noise pollution as evident from the literature.

Noise Indices at Different Zones during Day and Nighttime

Fig. 2 summarizes the range of noise pollution indices (L10, L50, L90), NC and LNP calculated for commercial, residential and silence zones for daytime and nighttime. It is evident that L10

value as high as 92 dB (A) and 80.7 dB (A) for daytime was recorded for commercial and residential areas, respectively. However, for silence zones, highest values recorded for daytime was 74.1 dB (A). Similarly, values obtained for L50, L90, L1 and L99 were in the sequence of commercial & residential & silence. In terms of LNP high values were obtained for commercial areas for daytime and nighttime i.e. 122.8 and 121.3, respectively.

Figure 2: Range of L10, L50, L90, NC and LNP calculated for commercial, residential and silence zone of the study areas during day and nighttime



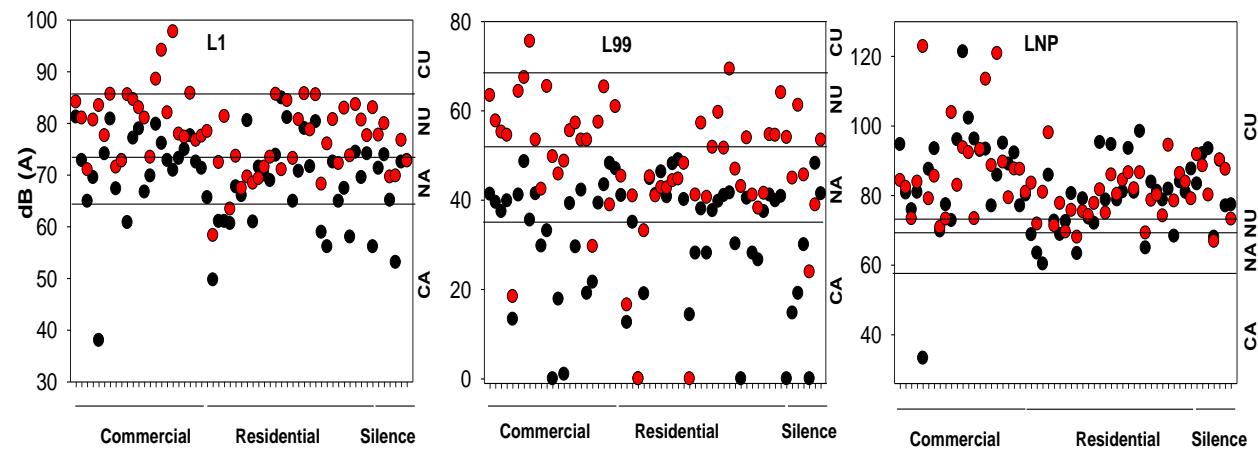
Similarly, values of NC as high as 52 was calculated for commercial areas. This is also pertinent to mention that nighttime values of NC calculated for all the 3 zones were high than the daytime values. This is because, the difference between L10 and L90 values were more at nighttime than at the daytime. The data show low values of Leq for night time but NC values are contradictory to Leq and as NC is an indicator of noise pollution which means that at nighttime high fluctuation is observed in all the three zones. Many studies take nighttime as a control due to less activities during nighttime; but noise descriptor such as NC in contrary to Leq were quite high which makes it evident that though Leq was low but fluctuation was high at nighttime.

Similarly, at few areas LNP values were high at nighttime than at daytime and mean difference between daytime and nighttime values were very low (S1). It is noteworthy that LNP is an important indicator of psychological and physiological impacts of noise (Hunashal & Patil, 2012). For healthy noise environment, LNP values shall not be greater than 88 dB (A) (Segaran et al., 2020) and in the current study 39% commercial areas at daytime and 49% of these areas at nighttime shows LNP values greater than 88 dB(A). Similarly, more residential areas shows LNP values greater than permissible limit at nighttime. As many people also work at nighttime, therefore it is deduced that these people may suffer from psychophysiological impacts of noise. Furthermore, many areas which showed Leq within permissible limit showed high values for NC and LNP for nighttime.

When analyzing noise indices through whisker plots (fig. 2), it is evident that median is lower than the mean values for residential areas for daytime and for silence zone it is higher than the mean, which means that high noise levels in residential areas and low noise levels in silence zone remained dominant throughout the day. However, no such skewedness was observed only for commercial areas and for nighttime for all the zones. For the daytime LNP, inner fence values extend more for commercial areas which is an indication that noise fluctuation is high for the commercial areas as compared to silence and residential areas. However, for nighttime fluctuations in the values of L50 and L90 are apparent for residential areas. Outliers are present as given in Fig. 2 for all the parameters which clearly show that extreme values were also recorded for all the areas. Therefore, whisker plots are an essential tool to analyze noise fluctuations, dominant values and extreme values.

Analyzing the noise parameters through US HUD criteria (fig. 3) showed that the half of the values of noise descriptor L1 [daytime] for all the areas (commercial, residential and silence) are falling under normally acceptable and 50% are falling under normally unacceptable values; for nighttime most of the values were falling under normally acceptable and clearly acceptable values. But still few values fall in the zone of clearly unacceptable values. As L1 is the loudest noise recorded during a time period therefore, L1 shall be taken into account while conducting noise surveys. The values of L99 [daytime] for majority of the commercial areas were falling in the range of normally unacceptable, while residential areas were within normally acceptable range. However, for nighttime majority of the areas were in the range of clearly acceptable and normally acceptable values. LNP values for almost all the zones were in the range of clearly unacceptable values both for daytime and nighttime.

Figure 3: Commercial, residential and silence zone categorization according to US HUD criteria for L1, L99 and LNP where red dots represent daytime and black dots represent nighttime; CA is clearly acceptable, NA is normally acceptable, NU is normally unacceptable and CU is clearly unacceptable



Another technique used to identify the fluctuations in the noise was to compare Leq values with other noise descriptors through line graph. Values of L10, L1, L50, L90 and L99 in comparison with Leq are summarized in fig. 4. It is clear from the data that Leq values are close to L10 values at commercial, residential and silence zone and not to L50, which means noise fluctuates broadly

Strong -ve	0	0	0	0	0	0	0	0	18
Moderate -ve	0	0	0	0	0	0	0	0	22
Residential									
Very strong +ve	87	67	57	90	40	83	33	57	3
Strong +ve	13	23	27	7	23	14	20	23	20
Moderate +ve	0	7	3	0	14	3	13	3	13
No Relationship	0	3	13	3	23	0	34	17	51
Strong -ve	0	0	0	0	0	0	0	0	3
Moderate-ve	0	0	0	0	0	0	0	0	10

The results of the present study showed that significant correlation between characteristics of the land use and noise indices was only observed for Ld, L10, L50 and LNP for the 3 different zones i.e. commercial, residential and silence for daytime but no significant difference was observed for the nighttime and for L90 and NC values in all the three zones both for daytime and nighttime (table 2). However, Oyedepo and Saadu (2009) statistically analyzed the correlations between different areas and concluded that there was no significant difference in noise pollution levels between commercial, high density areas and industrial areas. Post hoc comparisons for Ld, L10, L50 and NC using the Tukey HSD test indicated that the mean score for the commercial areas during daytime for the said parameters was significantly different than the residential areas respectively. However, rest of the parameters did not significantly differ from one another for day and for nighttime and no significant difference was observed for all noise indices for any zone. Ozer, et al. (2009) analyzed significant differences in noise levels among the streets but Anari and Movafagh (2014) found no significant difference between amount of traffic and road widths. Portela and Zannin (2010) used one-way ANOVA and Tukey statistical test to compare Leq means with different bus models, Palamuleni (2015) used the same tests to evaluate the effects of land-use types on noise and found significant difference between mean noise levels and study areas. Similarly, To, et al. (2002) revealed that most significant factors of urban traffic noise are number of heavy vehicles and the total traffic flow and Geraghty and O'Mahony (2016) by using same technique found significant differences in the mean of Leq between months. Table-2 ANOVA test to compare the effects of commercial areas, residential areas and silence zone on noise indices (Ld, L10, L50, L90, LNP and NC).

Table 2: ANOVA test

		Sum of Squares	df	Mean Square	F	Sig.
Ld	Between Groups	636.935	2	318.468	7.593	0.001
	Within Groups	2348.692	56	41.941		
	Total	2985.627	58			
L10	Between Groups	751.375	2	375.687	6.637	0.003
	Within Groups	3169.859	56	56.605		
	Total	3921.234	58			
L50	Between Groups	750.715	2	375.357	6.113	0.004
	Within Groups	3438.343	56	61.399		
	Total	4189.058	58			

L90	Between Groups	469.028	2	234.514	2.357	0.104
	Within Groups	5571.547	56	99.492		
	Total	6040.575	58			
LNP	Between Groups	1035.801	2	517.901	4.468	0.016
	Within Groups	6491.046	56	115.912		
	Total	7526.847	58			
NC	Between Groups	39.509	2	19.755	.328	0.721
	Within Groups	3368.727	56	60.156		
	Total	3408.236	58			

Noise maps were created for all the parameters to analyze the study area for noise pollution. Fig. 5 and 6 show the daytime maps for different noise indices; it clearly shows that noise pollution map for Leq, L10, L50 and L90 highlights more or less the same areas for high values but when looking at the LNP and NC the high noise levels shifts to other areas and same results are shown by nighttime maps. These maps are clearly indicative of the fact that while calculating noise levels in terms of Leq other noise descriptors shall also be considered to highlight for hot spots of noisy areas and the locations where there is high fluctuation.

Figure 5: Noise Pollution map for the urban zones of Peshawar; A (Leq); B (L10), C (L50); D (L90); E (LNP); F (NC) map for daytime i.e. from 06:00am to 10:00pm

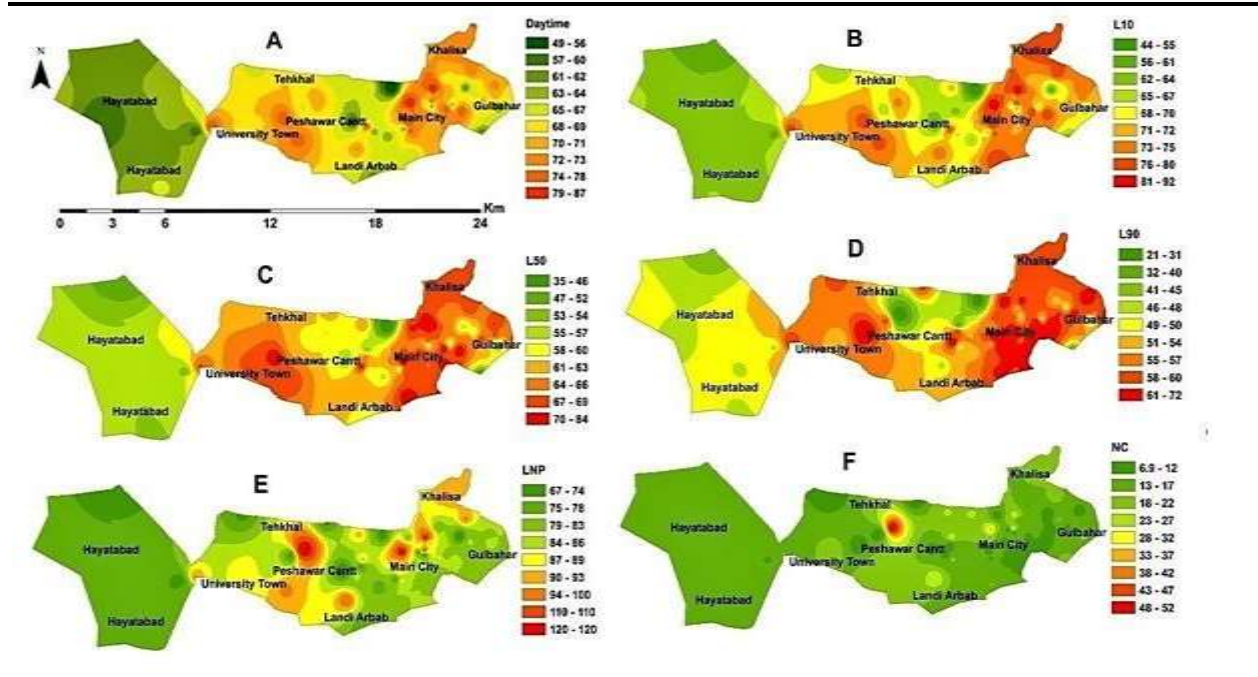
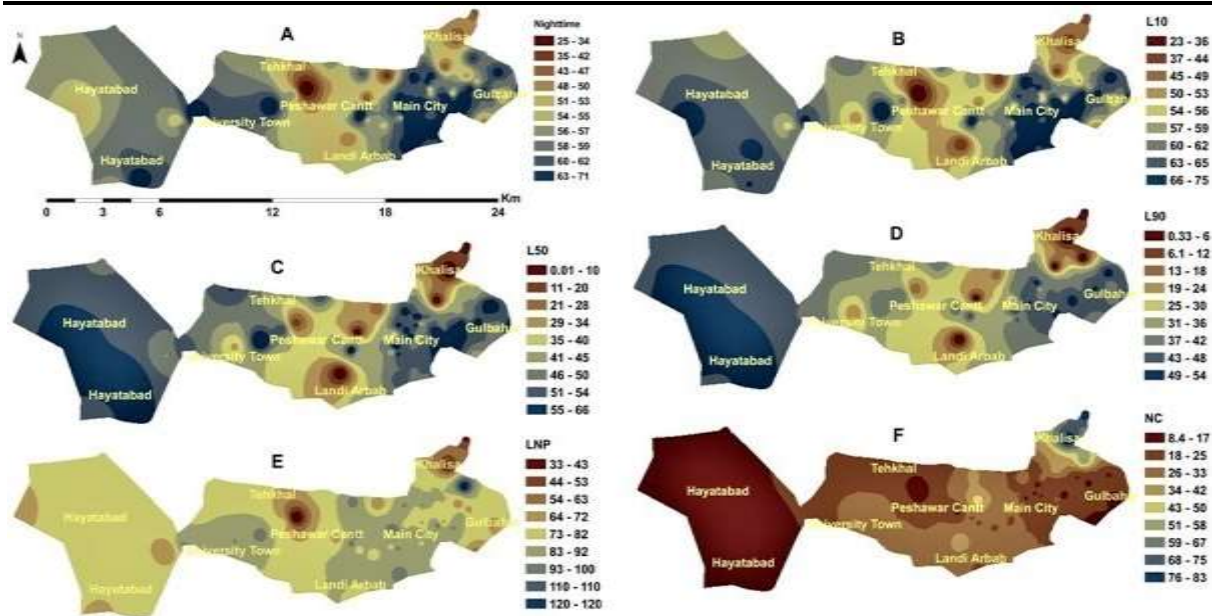


Figure 6: Noise Pollution map for the urban zones of Peshawar; A (Leq); B (L10), C (L50); D (L90); E (LNP); F (NC) map for nighttime i.e. from 10:00 pm to 06:00 am



The results of the study indicates that noise descriptor Leq, alone is not enough to understand the characteristic of noise, therefore, statistical noise levels are very useful for environmental noise monitoring as noise fluctuate over time in noise measurement. These statistical centiles help to understand the noise characteristic of the area and describes the magnitude of the problem.

Conclusion

The study concludes that noise levels measured across residential, commercial, and silence zones were consistently above the permissible limits set by Pak-NEQS and US HUD for various noise indices. Commercial areas exhibited the highest noise levels, followed by residential and silence zones. A strong correlation between Leq and other noise indices was observed across all zones, indicating that noise descriptors can effectively determine equivalent noise levels. However, relying solely on Leq is insufficient to fully assess the impact of noise on the exposed population. Therefore, additional noise indices should be included in noise surveys to capture the full spectrum of noise effects. Moreover, noise maps should not only represent Leq but also other noise indices to highlight fluctuations and their potential harm to residents health. These findings underscore the need for a comprehensive approach to noise monitoring and management.

The noise indices measured at the urban areas indicated broad fluctuations in the study area which may significantly affect the health of the exposed population. Due to these fluctuations the community is at risk of many psychophysiological diseases. It is recommended that detailed noise legislations and strict implementations of laws are required to protect the exposed population from high noise levels.

References

- Agarwal, S., & Swami, B.L. (2010). Noise annoyance under interrupted traffic flow condition for Jaipur city. *International Journal of Applied Science and Engineering*, 7(2), 159-168.

- Al-Shobaki, H., & Ahmad, J. (2008). A Study of Noise Pollution in Zarqa and Irbid, Jordan. *Jordan Journal of Civil Engineering*, 2(3), 279-306.
- Alam, Md, J. B., Afma, R., & Ahmed, M. F. (2001). Traffic Induced Noise Pollution in Dhaka City. *Journal of Civil Engineering*, 29(1), 1-9.
- Anari, M. H. S., & Afsaneh, M. (2014). 2014 Environmental noise pollution level at Birjand city using statistical and GIS techniques. *Journal of Environmental Studies*, 40(3), 693-710.
- Ariza, V., Ana, B., Francisco, J., JiménezH., & Eduardo, G., De Ravé. (2014). Influence of urban morphology on total noise pollution: Multifractal description. *Science of The Total Environment*, 472,1-8.
- Asensio, C., Recuero, M., Ruiz, M., Ausejo, M., & Pavon, I. (2011). Self-adaptive grids for noise mapping refinement. *Applied Acoustics* 72, 599-610.
- Babisch, W. (2014) Updated exposure-response relationship between road traffic noise and coronary heart diseases: a meta-analysis. *Noise and Health*, 16(68), 1-9.
- Baker, D. (2015). Application of noise guidance to the assessment of industrial noise with character on residential dwellings in the UK. *Applied Acoustics*, 93, 88-96.
- Basner, M. (2014). Auditory and non-auditory effects of noise on health. *The Lancet*, 383(9925), 1325-1332.
- Cai, M., Zou, J., & Xie, J., & Ma, X. (2015). Road traffic noise mapping in Guangzhou using GIS and GPS. *Applied Acoustics*, 87, 94-102.
- Cho, D. S., Jin, H. K., & D. M. (2007) Noise mapping using measured noise and GPS data. *Applied Acoustics*, 68, 1054-1061.
- Chowdhury, S., & Razzaque, M. M. & Helali, M., & Bodén, H. (2010). *Assessment of noise pollution in Dhaka city*.
- Clark, C., Crombie, R., Head, J., van Kamp, I., van Kempen, E., & Stansfeld, S. A. (2012). Does traffic-related air pollution explain associations of aircraft and road traffic noise exposure on children's health and cognition? A secondary analysis of the United Kingdom sample from the RANCH project. *American journal of epidemiology*, 176(4), 327–337. <https://doi.org/10.1093/aje/kws012>
- de Souza, Thaísa, B., Klaus C. Alberto, and Sabrina Andrade Barbosa 2020 Evaluation of noise pollution related to human perception in a university campus in Brazil. *Applied Acoustics*, 157, 107023.
- EEA (2014). *Noise in Europe 2014*. <https://www.eea.europa.eu/publications/noise-in-europe-2014>
- Evans, G., & Staffan, H. (2007). *Noise and cognitive performance in children and adults: Chichester*. John Wiley.
- Evans, J. D. (1996). *Straightforward statistics for the behavioral sciences*. Brooks/Cole.
- Frei, P., Evelyn, M., & Martin, R. (2014). Effect of nocturnal road traffic noise exposure and annoyance on objective and subjective sleep quality. *International Journal of Hygiene and Environmental Health*, 217, 188-195.
- Garoum, M., Weam, W., & Rhachi, M. (2010). Preliminary measurements and analysis of road traffic noise in Rabat city, morocco: Case of Agdal district. In 17th International Congress on Sound and Vibration (ICSV17), Cairo, Egypt.
- Geraghty, D., & Margaret, O'Mahony. (2016). Investigating the temporal variability of noise in an urban environment. *International Journal of Sustainable Built Environment*, 5(1), 34-45.
- Gholami, A. & Nasiri, Parviz & Monazzam, M. & Gharagozlou, A. & Monavvari, S.M. & Afrous, A.. (2012). Evaluation of traffic noise pollution in a central area of Tehran through noise mapping in GIS. *Advances in Environmental Biology*, 6. 2365-2371.
- Golmohammadi, R., Abbaspour, M., Nassiri, P., & Mahjub, H. (2009). A Compact Model for Predicting Road Traffic Noise. *Journal of Environmental Health Science and Engineering*, 6(3), 181-186.

- Hadzi-Nikolova, M., Dejan, M., & Ristova-Drewanz, E., & Ceravolo, S. L. (2012). Modeling and Mapping of Urban Noise Pollution with SoundPLAN Software. *International Journal for Science, Technics and Innovations for the Industry MTM* (Machines, Tecnologies, Materials). VI. 38-42.
- Halonen, J. I., Hansell, A. L., Gulliver, J., Morley, D., Blangiardo, M., Fecht, D., Toledano, M. B., Beevers, S. D., Anderson, H. R., Kelly, F. K., & Tonne, C. (2015). Road traffic noise is associated with increased cardiovascular morbidity and mortality and all-cause mortality in London, *European Heart Journal*, 36(39), 14 October 2015, Pages 2653–2661, <https://doi.org/10.1093/eurheartj/ehv216>
- Hammer, M. S., Tracy K. S., & Richard, L. N. (2014). Environmental Noise Pollution in the United States: Developing an Effective Public Health Response. *Environmental Health Perspectives*, 122(2), 115-119.
- Hemmingsen, J., Møller, P., Jantzen, K., Albin, M., Wierzbicka, A. & Gudmundsson, A., Loft, S. & Rissler, J. (2015). Controlled exposure to diesel exhaust and traffic noise – Effects on oxidative stress and activation in mononuclear blood cells. *Mutation Research/Fundamental and Molecular Mechanisms of Mutagenesis*. 121. 10.1016/j.mrfmmm.2015.03.009.
- Hohmann, C., Grabenhenrich, L., de Kluizenaar, Y., Tischer, C., Heinrich, J., Chen, C. M., Thijs, C., Nieuwenhuijsen, M., & Keil, T. (2013). Health effects of chronic noise exposure in pregnancy and childhood: a systematic review initiated by ENRIECO. *International journal of hygiene and environmental health*, 216(3), 217–229. <https://doi.org/10.1016/j.ijheh.2012.06.001>
- Hunashal, R. B., & Yogesh B. P. (2012). *Assessment of noise pollution indices in the city of Kolhapur, India*. The International Conference on Emerging Economies - Prospects and Challenges (ICEE-2012), 2012. Vol. 37, pp. 448-457. Procedia - Social and Behavioral Sciences.
- Jagniatinskis, A., Fiks, B., Zaporozhets, O., & Oosten, N. V. (2016). Annual noise assessment in the vicinity of airports with different flights' intensity. *Applied Acoustics*, 101, 168-178.
- Joshi, S. K., Devkota, S., Chamling, S., & Shrestha, S. (2003). Environmental noise induced hearing loss in Nepal. *Kathmandu University medical journal (KUMJ)*, 1(3), 177–183.
- Karipidis, I., Vienneau, D., Habermacher, M., Köpfli, M., Brink, M., Probst-H., Nicole, R., Martin, W., Jean, M. (2014). Reconstruction of historical noise exposure data for environmental epidemiology in Switzerland within the SiRENE project. *Noise Mapping*, 1, 1, 2014, pp. 000010247820140002. <https://doi.org/10.2478/noise-2014-0002>
- Khaiwal, R., Singh, T., Tripathy, J. P., Mor, S., Munajl, S., Patro, B., & Panda, N. (2016). Assessment of noise pollution in and around a sensitive zone in North India and its non-auditory impacts. *Science of the Total Environment*, 566, 981-987.
- Klæboe, R., Engeli, E. & Steinnes, M. (2006). Context sensitive noise impact mapping. *Applied Acoustics*, 67, 620-642.
- Lam, Kin-Che, Chan, P. K., Chan, T. C., Au, W. H., & Hui, W. C. (2009). Annoyance response to mixed transportation noise in Hong Kong. *Applied Acoustics*, 70(1), 1-10.
- Lee, S. C., Joo, Y. H., & Jin, Y. J. (2015). Effects of acoustic characteristics of combined construction noise on annoyance. *Building and Environment*, 92, 657-667.
- Li, B., Shu, T., & Dawson, R. W. (2002). Evaluation and analysis of traffic noise from the main urban roads in Beijing. *Applied Acoustics*, 63(10), 1137-1142.
- Malakooti, M., Ahmadian, M., Yaghmaeian, K., Dowlatabadi, S.h, & Ravandi, M. G. (2012). Level changes of traffic noise in kerman city, southeast iran. *Iranian journal of public health*, 41(1), 107–113.
- Mansouri, N., Pourmahabadian, M., & Ghasemkhani, M. (2006). Road traffic noise in downtown area of Tehran. *Journal of Environmental Health Science and Engineering*, 3(4), 267-272.
- Mehdi, M. R., Kim, M., Seong, J. C., & Arsalan, M. H. 2011 Spatio-temporal patterns of road traffic noise pollution in Karachi, Pakistan. *Environment international*, 37(1), 97-104.
- Méline, J., Van Hulst, A., Thomas, F. (2013). Transportation noise and annoyance related to road traffic in the French RECORD study. *Int J Health Geogr*, 12, 44 (2013). <https://doi.org/10.1186/1476-072X-12-44>.

- Mishra, R.K., Parida, M., & Rangnekar, S. (2010). Evaluation and analysis of traffic noise along bus rapid transit system corridor. *International Journal of Environmental Science and Technology* 7(4), 737-750.
- Morillas, J. M. B., Escobar, V. G., Sierra, V. G. M., Gomez, R. V., & Carmona, J. T. (2002). An environmental noise study in the city of Cáceres, Spain. *Applied acoustics*, 63(10), 1061-1070.
- Moudon, A. V., Escobar, V. G., Sierra, V. G. M., Gomez, R. V., & Carmona, J. T. (2009). Real noise from the urban environment: how ambient community noise affects health and what can be done about it. *American journal of preventive medicine*, 37(2), 167-171.
- Murphy, E., & Eoin, A. K. (2010). Strategic environmental noise mapping: Methodological issues concerning the implementation of the EU Environmental Noise Directive and their policy implications. *Environment international*, 36(3), 290-298.
- Murphy, E., Eoin, A. K., & Henry, J. R. (2009). Estimating human exposure to transport noise in central Dublin, Ireland. *Environment International*, 35(2), 298-302.
- Muzet, A. (2007). Environmental noise, sleep and health. *Sleep medicine reviews*, 11(2), 135-142.
- Nassiri, P., Karimi, E., Monazzam, M.R., Abbaspour, M., & Taghavi, L. (2016). Analytical comparison of traffic noise indices—A case study in District 14 of Tehran City. *Journal of Low Frequency Noise, Vibration and Active Control*. 35(3), 221-229. doi:10.1177/0263092316660917
- Nejadkoorki, F, E Yousefi, and F Naseri (2010). Analysing street traffic noise pollution in the city of Yazd. *Journal of Environmental Health Science and Engineering*, 7(1), 53-62.
- Olayinka, O.S. (2012). Noise map: Tool for abating noise pollution in urban areas. *Open Access Scientific Reports*, 1, 185.
- Oyedepo, O. S., & Abdullahi, A. S. (2009). A comparative study of noise pollution levels in some selected areas in Ilorin Metropolis, Nigeria. *Environmental monitoring and assessment*, 158(1), 155-167.
- Ozer, S., Yilmaz, H., Yeil, M. & Yesil, P. (2009). Evaluation of noise pollution caused by vehicles in the city of Tokat, Turkey. *Scientific Research and Essay*, 4, 1205-1212.
- Ozkurt, N., Samet, F. H., & Deniz, S. (2015). Estimation of airport noise impacts on public health. A case study of İzmir Adnan Menderes Airport. *Transportation Research Part D: Transport and Environment*, 36, 152-159.
- Palamuleni, L. G. (2015). A comparative land use-based analysis of noise pollution levels in selected urban centers of Nigeria. *International journal of environmental research and public health* 12(10), 12225-12246.
- Pathak, V., Tripathi, B. D., & Mishra, K. M. (2008). Evaluation of traffic noise pollution and attitudes of exposed individuals in working place. *Atmospheric Environment*, 42(16), 3892-3898.
- Phan, Hai Yen Thi, et al. (2010). Characteristics of road traffic noise in Hanoi and Ho Chi Minh city, Vietnam. *Applied acoustics*, 71(5), 479-485.
- Phukan, B., & Kalyan, K. (2013). An experimental study of noise pollution in Gauhati University campus, Guwahati, Assam, India. *International Journal of Environmental Sciences* 3(5), 1776.
- Piccolo, A., Plutino, D., & Cannistraro, G. (2005). Evaluation and analysis of the environmental noise of Messina, Italy. *Applied Acoustics*, 66(4), 447-465.
- Portela, B. S., & Paulo, H. T. Z. (2010). Analysis of factors that influence noise levels inside urban buses. *JSIR*, 69(9), 684-687.
- Rana, Rajib, Chou, C. T., Bulusu, N., Kanhere, S. (2015). Ear-phone: A context-aware noise mapping using smart phones. *Pervasive and Mobile Computing*, 17, 1-22.
- Sahu, A.K., (2020). *Evaluation and Modeling of Traffic Noise in Berhampur City, India*. Fluctuation and Noise Letters, 2050044.
- Salvato, J. A., Nelson L. N., & Franklin, J. A. (2003). *Environmental engineering*. John Wiley; Sons.
- Sánchez-Sánchez, R., Fortes-Garrido, J. C., & Bolívar, J. P. (2015). Characterization and evaluation of noise pollution in a tourist coastal town with an adjacent nature reserve. *Applied Acoustics*, 95, 70-76.

- Segaran, V.C., Tong, Y. G., Abas, N. H., Daniel. B. D., Nagapan, S., & Kelundapayan, R. (2020). Traffic Noise Assessment among Residential Environment in Batu Pahat, Johore, Malaysia. IOP Conference Series. *Materials Science and Engineering*, 713, pp. 012049. IOP Publishing.
- Suárez, E., & Barros, J. L. (2014). Traffic noise mapping of the city of Santiago de Chile. *Science of the total environment*, 466, 539-546.
- Swain, K.B., & Shreerup, G. (2013). Integration and comparison of assessment and modeling of road traffic noise in Baripada town, India. *Int. J. Energy Environ*, 4(2), 303-10.
- To, W.M., Rodney, C. W., Gabriel, C. K. & Yau, C. (2002). A multiple regression model for urban traffic noise in Hong Kong. *The Journal of the Acoustical Society of America*, 112(2), 551-556.
- Tobías, A., Recio, A., Díaz, J., & Linares, C. (2015). Health impact assessment of traffic noise in Madrid (Spain). *Environmental research*, 137, 136–140. <https://doi.org/10.1016/j.envres.2014.12.011>
- Tripathy, D. P. (1999). *Noise pollution*. APH Publishing.
- Tsai, K. T., Min-Der, L., & Yen-H. C. (2009). Noise mapping in urban environments: A Taiwan study. *Applied Acoustics*, 70(7), 964-972.
- WHO, (2011). *Burden of disease from environmental noise: Quantification of healthy life years lost in Europe*.
- Yang, W., He, J., He, C., Cai, M. (2020). Evaluation of urban traffic noise pollution based on noise maps. *Transportation Research Part D, Transport and Environment*, 87, 102516.
- Yilmaz, H., & Serkan, O. (2005). Evaluation and analysis of environmental noise pollution in the city of Erzurum, Turkey. *International Journal of Environment and Pollution*, 23(4), 438-448.
- Tao, Y., Kou, L., Chai, Y., & Kwan, M. P. (2020). Associations of co-exposures to air pollution and noise with psychological stress in space and time: A case study in Beijing, China. *Environmental Research*, 110399.
- Zannin, P., Henrique, T., Fabiano, B. D., & Wiliam, A. B. (2002). Environmental noise pollution in the city of Curitiba, Brazil. *Applied Acoustics*, 63(4), 351-358.
- Zeid, N., Seh, M., & Issam, R. A. R. (2000). Measurement of noise pollution in the community of Arraba. *Acta Acustica United with Acustica*, 86(2), 376-378.